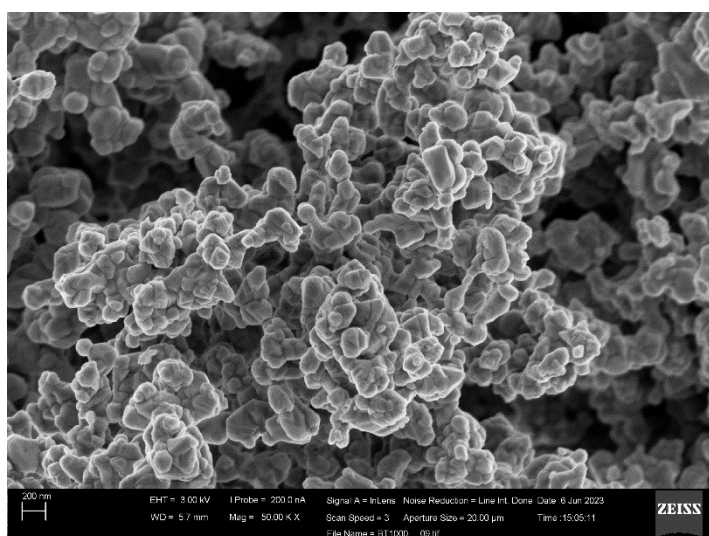


Structural, linear and nonlinear optical properties of perovskite BaTiO₃ tri-doped Er/Yb/Zn embedded in tellurium-zinc glass

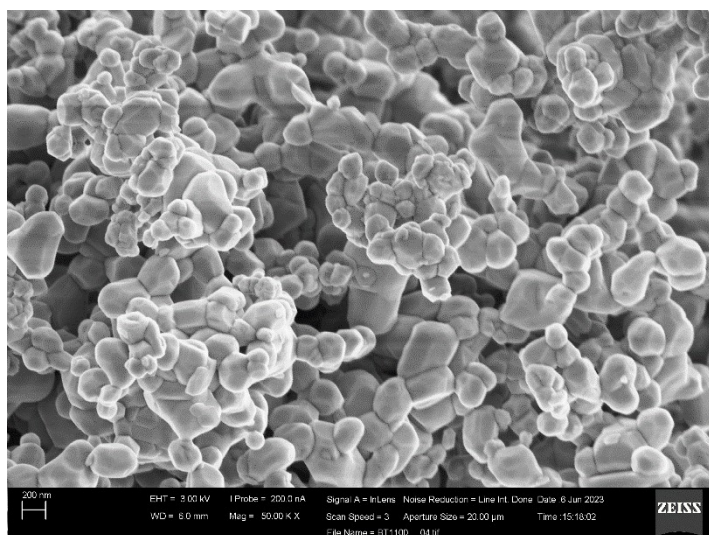
J.L. Clabel H., André G. Pelosi, João V.P. Valverde, L. Misoguti, L. De Boni, Cleber R. Mendonça.

Scanning electron microscopy

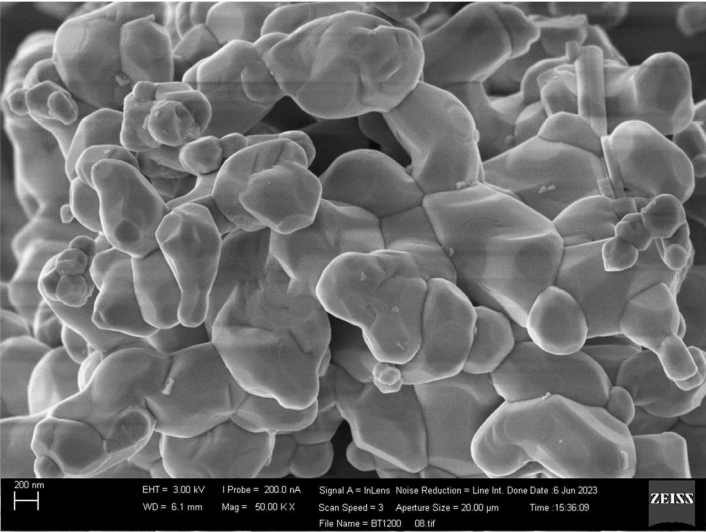
BT1000



BT1100



BT1200



Nonlinear optical properties

TZ glass

