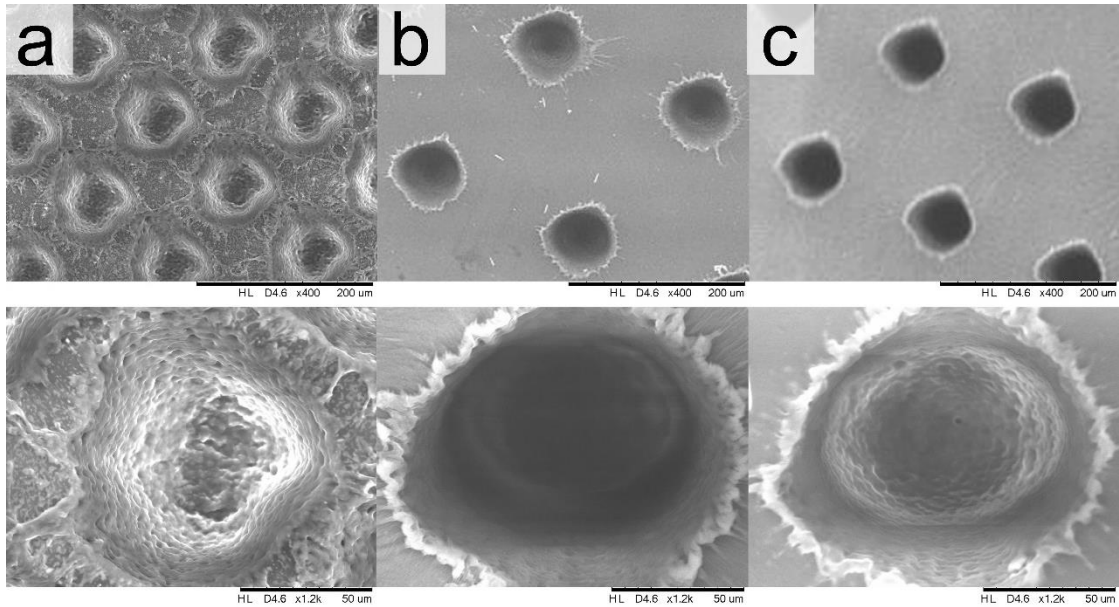


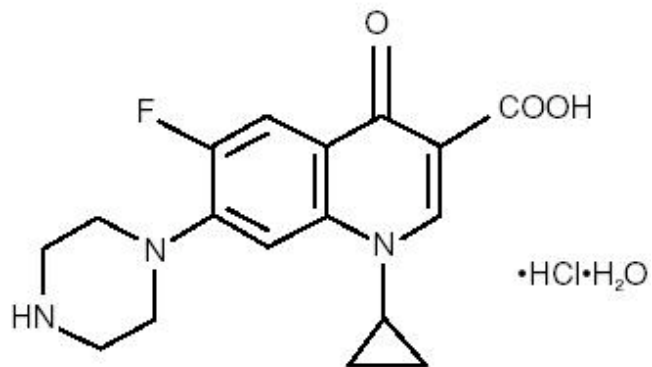
Supplementary data:

- Influence of nitrogen flux during micromachining on pore quality

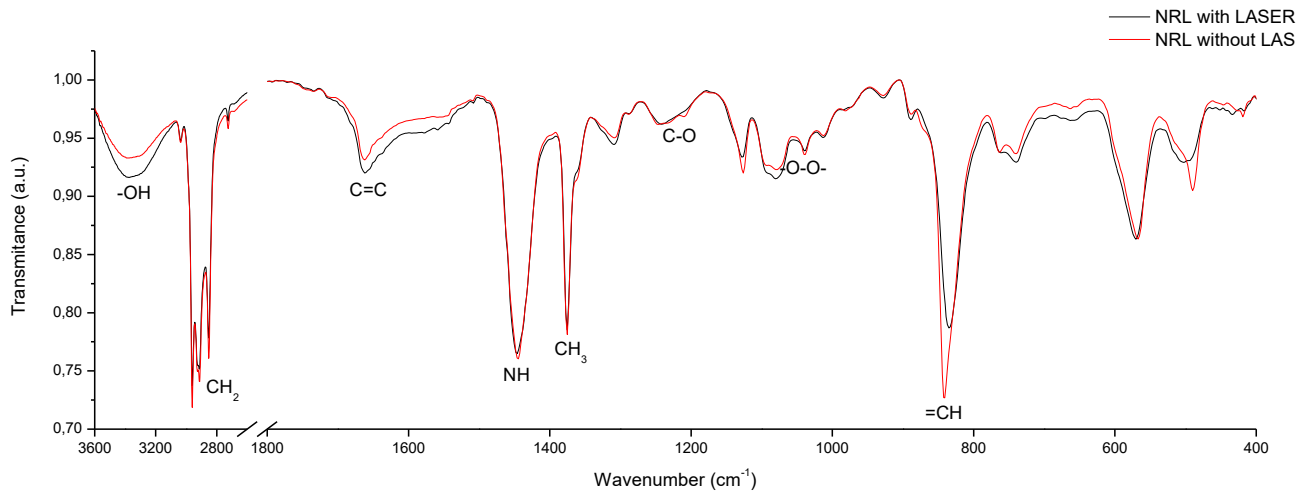


SEM images of micropores created with (a) 35 pulses/pore (8000 pores/cm²) and no nitrogen flow. (b) and (c) 50 and 100 pulses/pore respectively (4000 pores/cm²) and constant nitrogen flow.

- Chemical structure of ciprofloxacin



- FT-IR spectra of NRL membranes before (red line) and after (black line) micropore fabrication



- FT-IR spectra of drug-loaded NRL membranes before (red line) and after (black line) micropore fabrication

